

*Gabriella Disler*

# Gabriella Disler

lives and works in Basel CH

Exhibitions in Switzerland and abroad: Belgium. France. Germany. Japan. Master of Artistic Research & Design. Sint Lucas. Antwerpen BE. Master of Fine Arts. édhéa Sierre. CH //

artistic practice: photography. site specific work. installation. text based work

www.gabrielladisler.ch // +41 79 646 32 76 //

## one person show

- 2019 HOW LONG IS... in the patio of projectspace m54. Basel CH  
FENSTER #21. YONDER. Basel CH
- 2018 en passant. BelleVue - space of photography. Basel CH
- 2013 Light Space Light. Kunsthalle Wil SG CH
- 2012 time and moment. Kobo Chika Galerie. Tokyo. JP
- 2009 ephemerally movement. Kobo Chika Galerie. Tokyo. JP
- 2008 where flowing holds itself. Galerie Werkstatt. Reinach

## groupe show (selection)

- 2025 scheduled
- 2024 a summer of perfect brightness, see you next tuesday, Basel  
weg ist weg oder 70 arten ... , space25, Basel  
Galerie Chelsea Reloaded, projectspace 54, Basel
- 2022 L' Ultim Last Exit Eden. Sta.Maria/ValMüstair. CH  
PING PONG. projectspace M54.Basel CH and ART Miami. USA
- 2021 regionale22. wide open. projectspace M54. Basel CH  
Art on Building. Sta.Maria/ValMüstair. CH
- 2020 regionale21. The Great Unveiling. Kunsthalle Palazzo. Liestal.  
curated by Michael Babics. Basel CH
- 2019 regionale20. Future Perfect curated by Isabel Balzer. Basel CH  
projectspace M54. Basel CH  
VICINITAS with Max Grauli. Basel CH @MüllerPalermo  
TWINGI LandART. Valais. CH with Franziska Lauber. Bern CH  
On Destruction and Preservation. balzerprojects. Basel CH  
with Geoffrey de Beer.(BE); Maija Blåfield(FI) Bram Braam(DE).  
Stefanie Bühler(DE). Kerstin Honeit(DE)
- 2018 Spot on Nairs. Fundaziun NAIRS. Scuol CH.  
center for contemporary art
- 2017 Alternative Acts. Kunsthall Extra City. 2600 Antwerpen BE  
Quicksand. Duinstraat124. 2060 Antwerp BE
- 2016 Japan im Palazzo. Palazzo Liestal. BL. CH  
Aux sources des l'inspiration-Maurice Zermatten  
Fondation Pierre Arnaud. Lens CH  
quelle langue alors? Villa Moyard. Morges CH  
with Alex Herzog ZH. Fork Burke USA/CH. Victorine Müller ZH.  
Nici Jost ZH. Robert Ireland Lausanne. Erika Pirl. MEX/CH&le Chic
- 2015 20/20vision - 20Curators/20Photographers  
Christophe Guye Gallery. Zürich CH  
2+ // duo-logue. Kaskadenkondensator Basel CH  
with Alex Herzog. Zürich & Guests
- 2014 jetzt kunst n°4. Marzili. Bern CH  
Tout va très bien. merci / part I & II  
+ION Projectspace Zürich & KASKO Basel CH  
Show Showed Shown. Le Manoir. Martigny CH  
void and profusion. Chelsea Gallery. Laufen CH

## artist in residence

- 2022/20/19 atelierdagiast. Sta.Maria Val Müstair CH
- 2013 Fundaziun NAIRS. Scuol CH  
Center for contemporary art
- 2012 Tokyo Wonder Site. Tokyo JP  
Neues Kunstforum Köln. Köln DE
- 2010 Fundaziun NAIRS. Scuol . Center for contemporary art

## publications / texts

- 2023 listen to a handful of time / auf eine handvoll zeit hören  
artist book, Publisher edition-clandestin.ch & Gabriella Disler
- 2022 entfalte den schatten des sandkorns, limited edition 11/11  
(each contains a handwritten text) Lyrics/Texts:©GabriellaDisler.  
Basel CH, selected text are translated into raetho romanic
- 2020 Transistor N#4. Zeitschrift für zeitgenössische Lyrik;  
Wo Worte ein Echo; Dialog between Eva Maria Leuenberger.  
Biel/Bienne CH & Gabriella Disler. Basel CH
- 2019 HOW LONG IS ... Dialog between Gabriella Disler and  
Matthias Aeberli; Basel CH  
TERRA CIRCOLARE. limited edition; hand edited  
Cooperation with Franziska Lauber. Bern CH  
for TWINGI LandArt 2019. Binn Wallis
- 2018 wildwuchs. Annette Hoffman to en passant. Basel CH  
Janine Schmutz; Basel to en passant. Basel CH
- 2017 listen to your eyes; artist book; text and photographs:  
Gabriella Disler. Antwerpen/Basel CH
- 2016 Japan in Palazzo. catalogue Kunsthalle Palazzo Liestal. CH  
Aux sources des l'inspiration-Maurice Zermatten  
catalogue Fondation Pierre Arnaud. Lens CH
- 2015 20/20Vision. catalogue Christophe Guye Gallery. Zürich CH  
Essay; W. A. Ewing. Text; Gabrielle Obrist. Zürich / Wil CH
- 2013 Light Space Light. publication  
text by Gabrielle Obrist. Curator. Zürich / Wil CH

## supports (s) / purchase (p)

- 2021 kulturelles bl. Departement Culture  
Basellandschaft CH(s)
- 2013 Departement Culture City of Basel CH(s)  
kulturelles bl. Departement Culture  
Basellandschaft CH(s)
- 2012 Departement Culture City of Basel CH(s)  
Embassy of Switzerland Tokyo JP (s)  
Bezirksvertretung Innenstadt Köln. Cologne DE
- 2011 Departement Culture City of Basel CH(s)
- 2009 Departement Culture City of Zug CH(s)

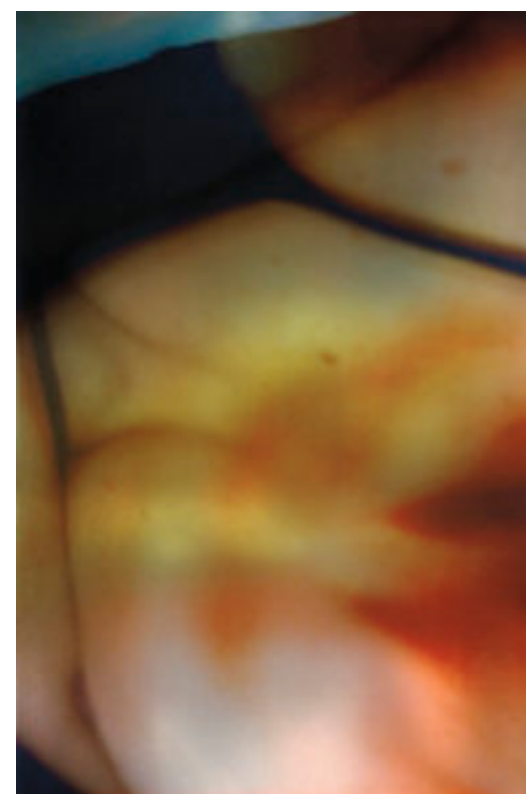
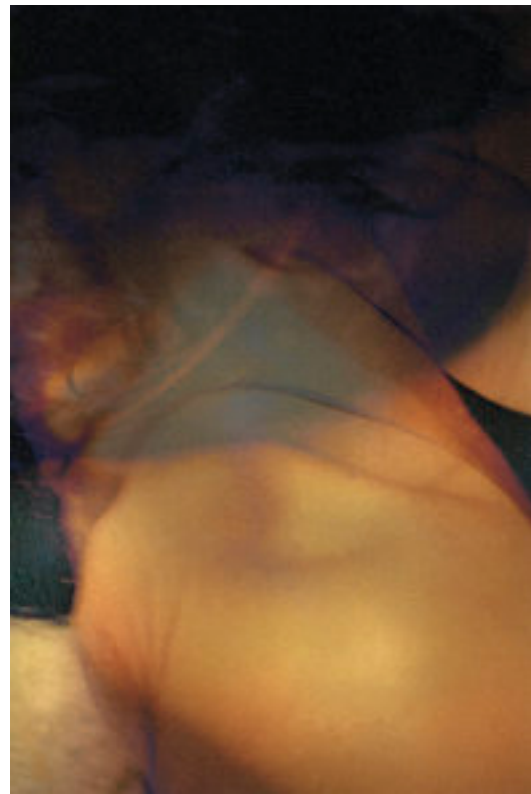
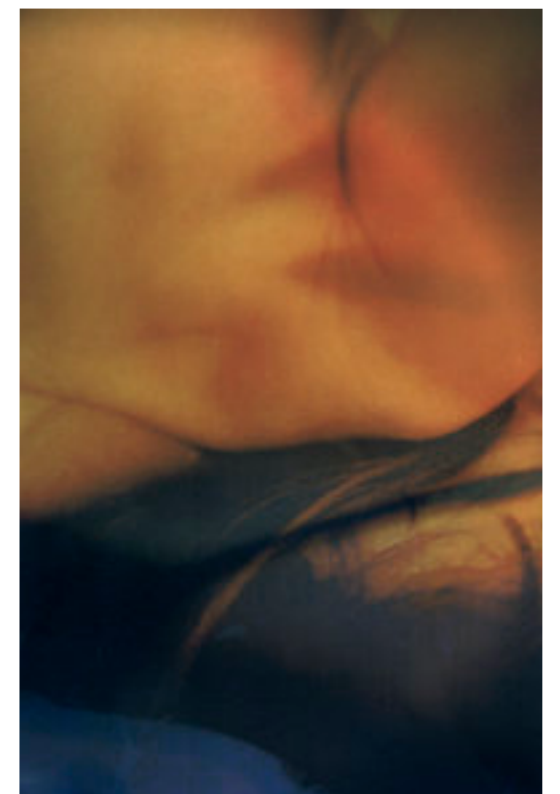
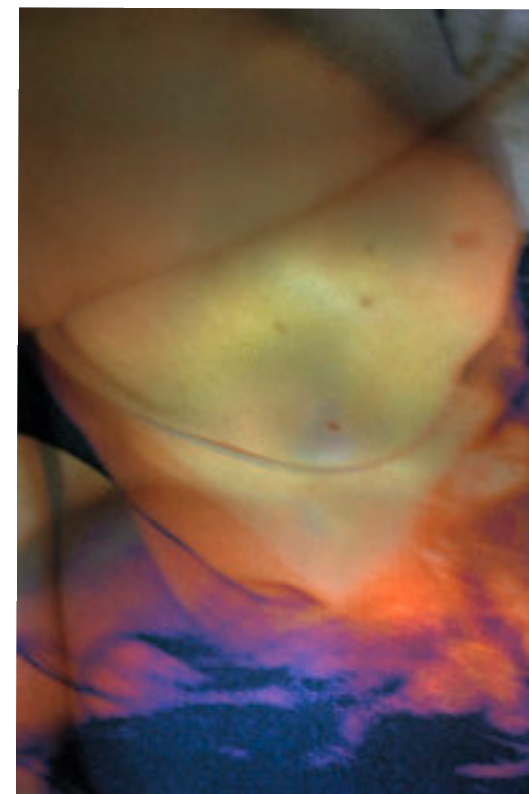
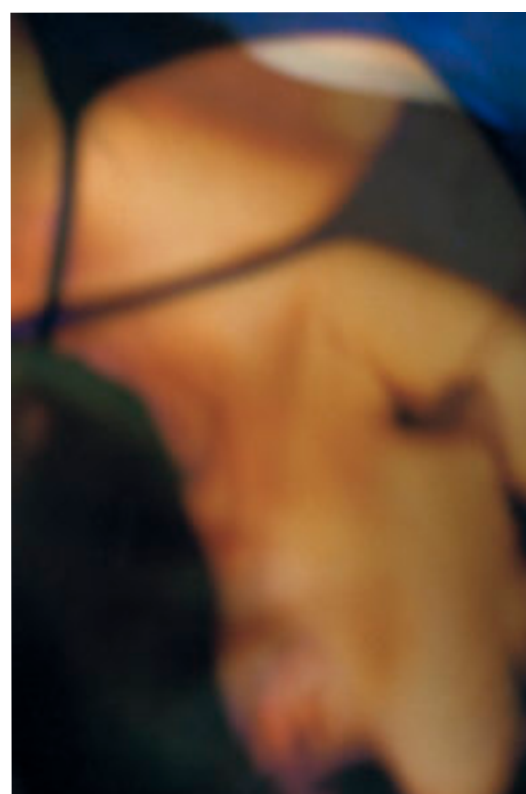
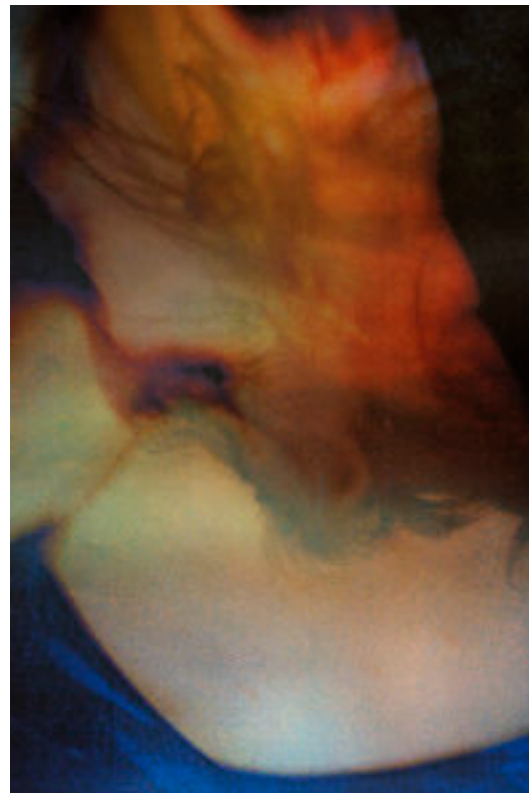
## projects

- 2016 quelle langue alors? by 2+ // duo-logue  
with Alex Herzog ZH. and guests  
Villa Moyard. Morges CH
- 2015 trave\_logue by 2+ // duo-logue  
Kaskadenkondensator Basel CH  
with Alex Herzog. Zürich/Antwerp and guests
- 2014 Tout va très bien. merci / part I & II  
+ION Projectspace Zürich & Kaskaden  
kondensator Basel CH; with Alex Herzog. Zürich/  
Antwerpen and Sibylle Omlin. édhéa Sierre. CH

## biography

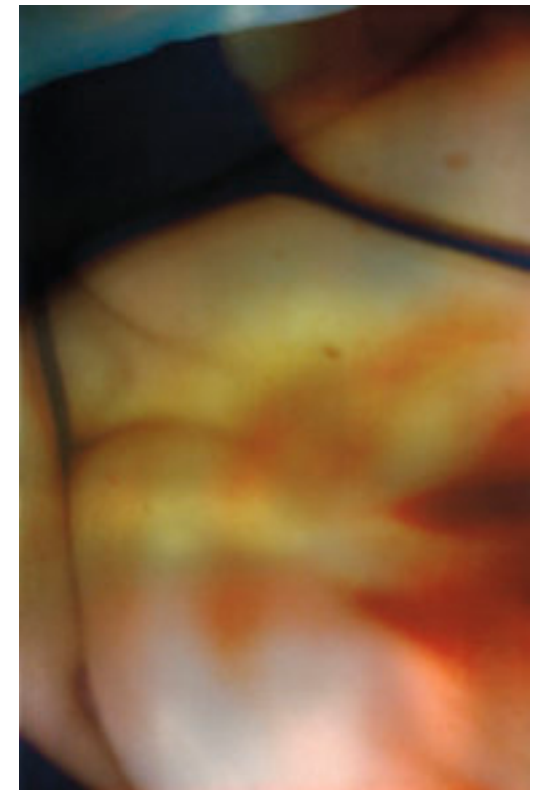
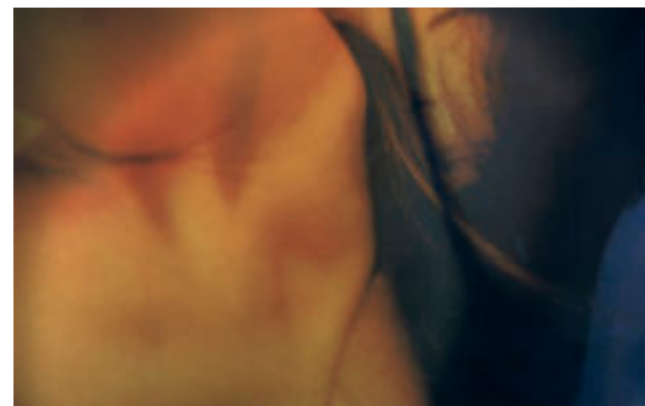
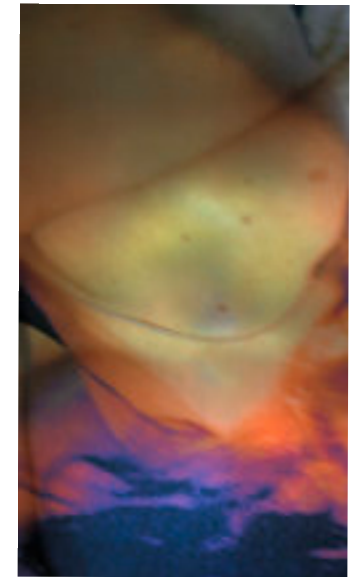
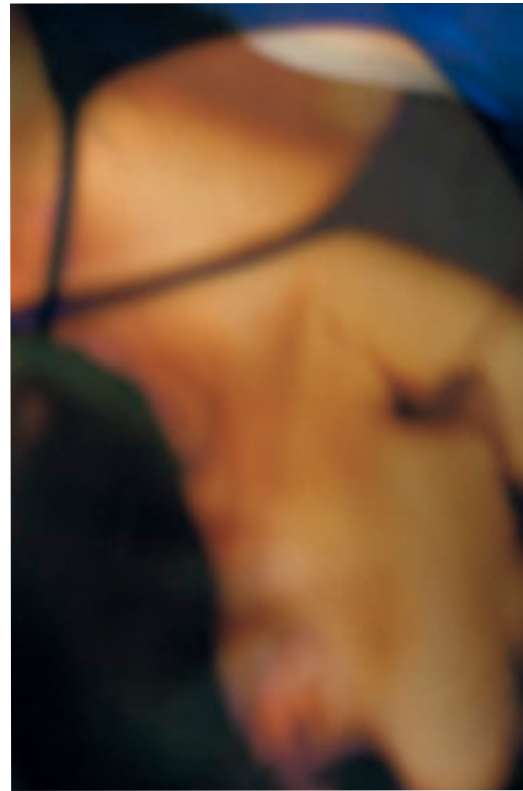
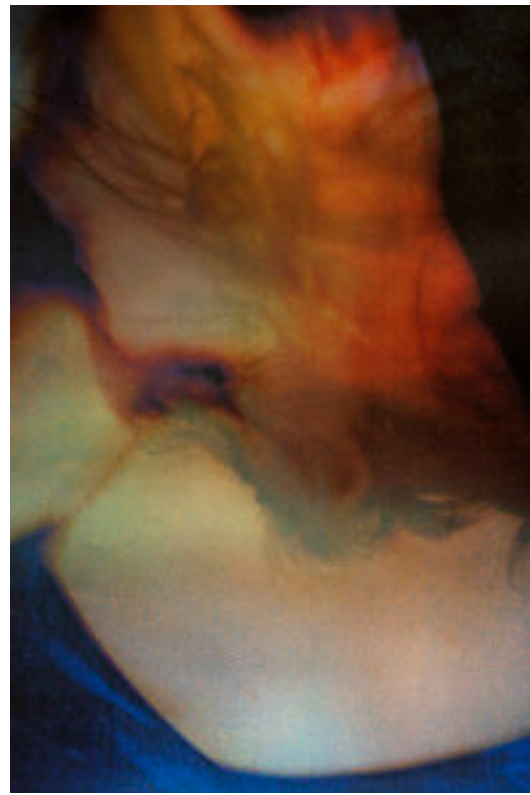
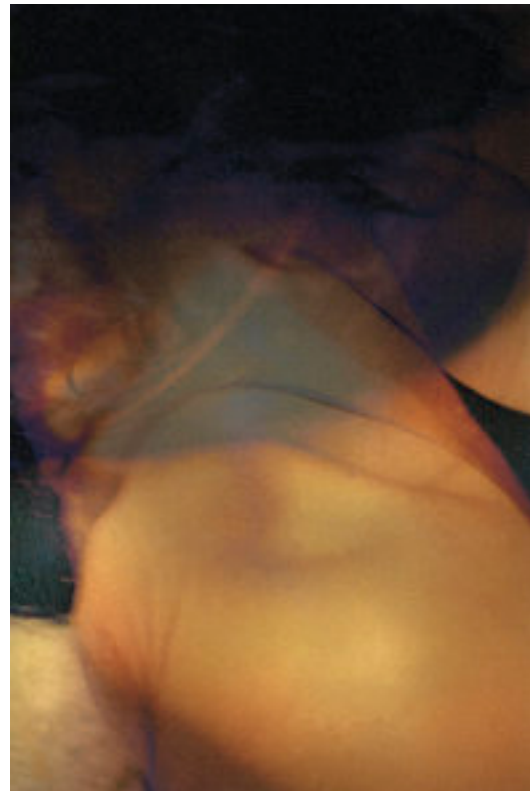
- 2016-2017 Master of Artistic Research Art & Design. Sint Lucas  
University College of Art & Design. Antwerpen BE
- 2013-2015 Master of Fine Arts. MAPS édhéa Sierre
- 2018- Member of Swiss Artistic Research Network. SARN  
www.sarn.ch
- 2018-2019 Member of 9x9 Speaking Corner Team  
public discours in contemporary art. talks. events  
@ dock-Basel ch
- 2016-2019 Board Member of DOCK-Basel CH
- since 2021 parttime job at Kunstmuseum Basel
- 2019-2022 visual art courses
- 2016-2018 public and private guided tours (freelance)  
Vitra Design Museum. Weil a.Rhein. DE
- 2010-2015 Assistent Museum Services. Museum  
of Design. Zürich (part-time). public and  
private guided tours Museum of Design. Zürich CH
- 2009 Scientific Assistent (part-time).  
Museum of Design. Zürich CH
- 2003-2008 Coach (part-time)
- 2002-2003 Scientific Assistent (part-time)  
Coninx-Museum. Zürich CH
- 2002 Scientific Assistent (part-time). Research Project  
www.mal.ch. University Basel CH
- 2000-2001 CO-Manager Project Study-Week  
World in Basel CH & www.mal.ch

formerly educated as dipl. Social Paedagoge and  
dipl. Laboratory Technician



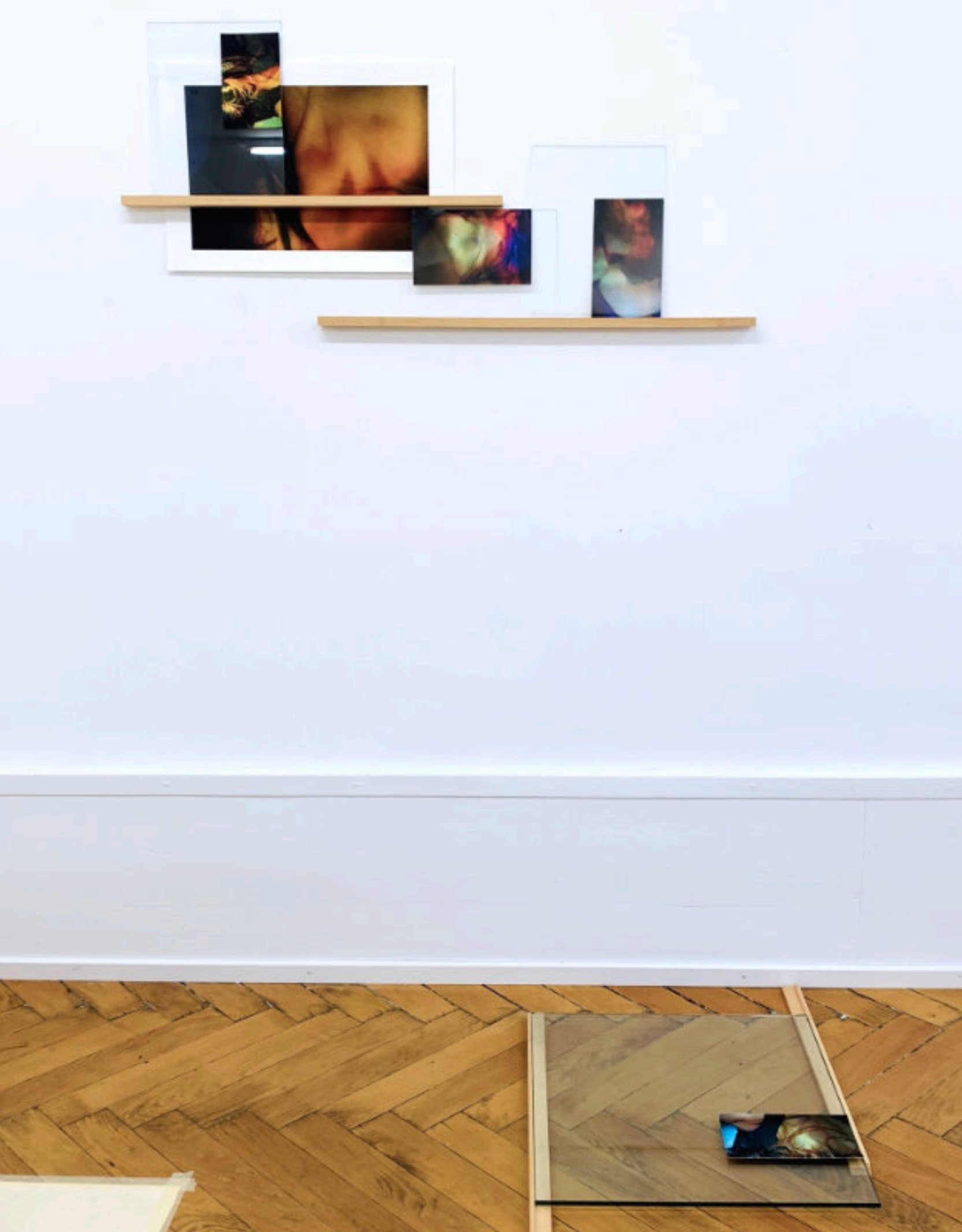
**over the eyelid 2025 (worktitle)**  
Installation, mixed media, studio view,  
possible assembly  
photos various dimension,  
color fine art print  
(analog photography)

the photographs 'over the eyelid' are multi-layered images composed of collected analogue photographs of body fragments. The research in my archive referred to traces and connections of times, bodies, things and events. In our memories, emerging images hardly show any clear outlines; blurred parts of an event flashes up.

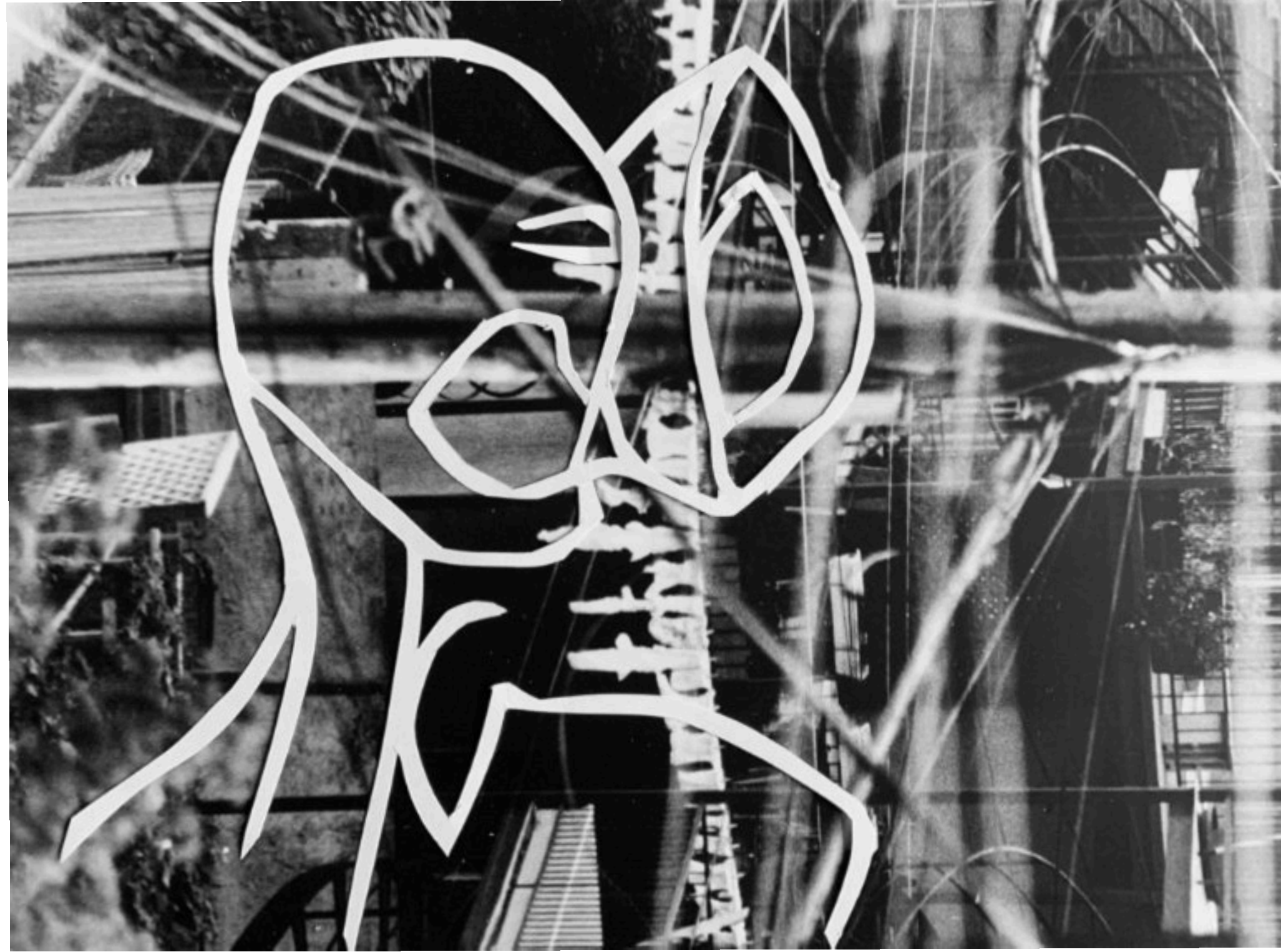


**over the eyelid 2025 (worktitle)**  
Studio view, possible assembly  
various dimension, color fine art print  
(analog photography)

print direct mounted on wall



**over the eyelid 2025 (worktitle)**  
Installation, mixed media, studio view,  
possible assembly  
photos various dimension,  
color fine art print  
(analog photography)



Body Awareness. Sensitivities. 2024  
Cut Out draw on Photography 21x15,5cm, 21 x 29cm  
**available**



**Body Awareness. Sensitivities. 2024**  
25x20cm color photo; longisland 1998, cut out draw feet 2022  
20x15,5cm color photo; roots 1998, cut out draw arm 2023  
21x15,5cm color photo; koi fish, tokyo 2009, cut out draw head 2023  
framed: 40x30cm  
**Not available**



**Sensitivities 2024**

25x20cm b/w hand edited photo; longisland 1998, cut out draw feet 2022  
20x20cm b/w fine art print; en, nairs 2015, cut out draw feet 2019  
20x20 b/w fine art print; bourgogne, france 1997, cut out draw head 2019

framed: 52x37cm  
**available**



**Landschaft Findung 2. 2022**

lecture performance a la riva del rom . Sta.Maria ValMüstair

Texte von Gabriella Disler. Basel CH

enthalten in der publikation '**entfalte den schatten des sandkorns**'

limitierte edition 11/11 & 3 ea. signiert und nummeriert (jedes exemplar enthält einen handgeschriebenen text)

einzelne texte in deutsch und rätoromanisch

photography by Esther Schena. Zürich

die texte '**entfalte den schatten des sandkorns**' sind wie notizen eines einzigen moments im raum. an einem ort. flüchtige territorien. sie kreisen um die ablaufende zeit sowie die veränderung der umgebung und oszillieren zwischen innerer und äußerer wahrnehmung. sie machen die bewegung eines einzigen augenblicks. der ganz unmerklich ist. hörbar. spuren des gesprochenen wortes dauern und bleiben ... und sind doch ein flüchtiger zustand des seins.



'unfold the shadow of a grain of sand' are like notes of a single moment in space. in one place. fleeting territories. they revolve around time running out. as well as the change of the environment and oscillate between inner and outer perception. They make the movement of a single moment. which is quite imperceptible. audible. traces of the spoken words last and remain ... and yet are a fleeting state of being

#### Landschaft Findung 1\*. 2022

lecture performance a la riva del rom . Sta.Maria ValMüstair. Texts by Gabriella Disler. Basel CH

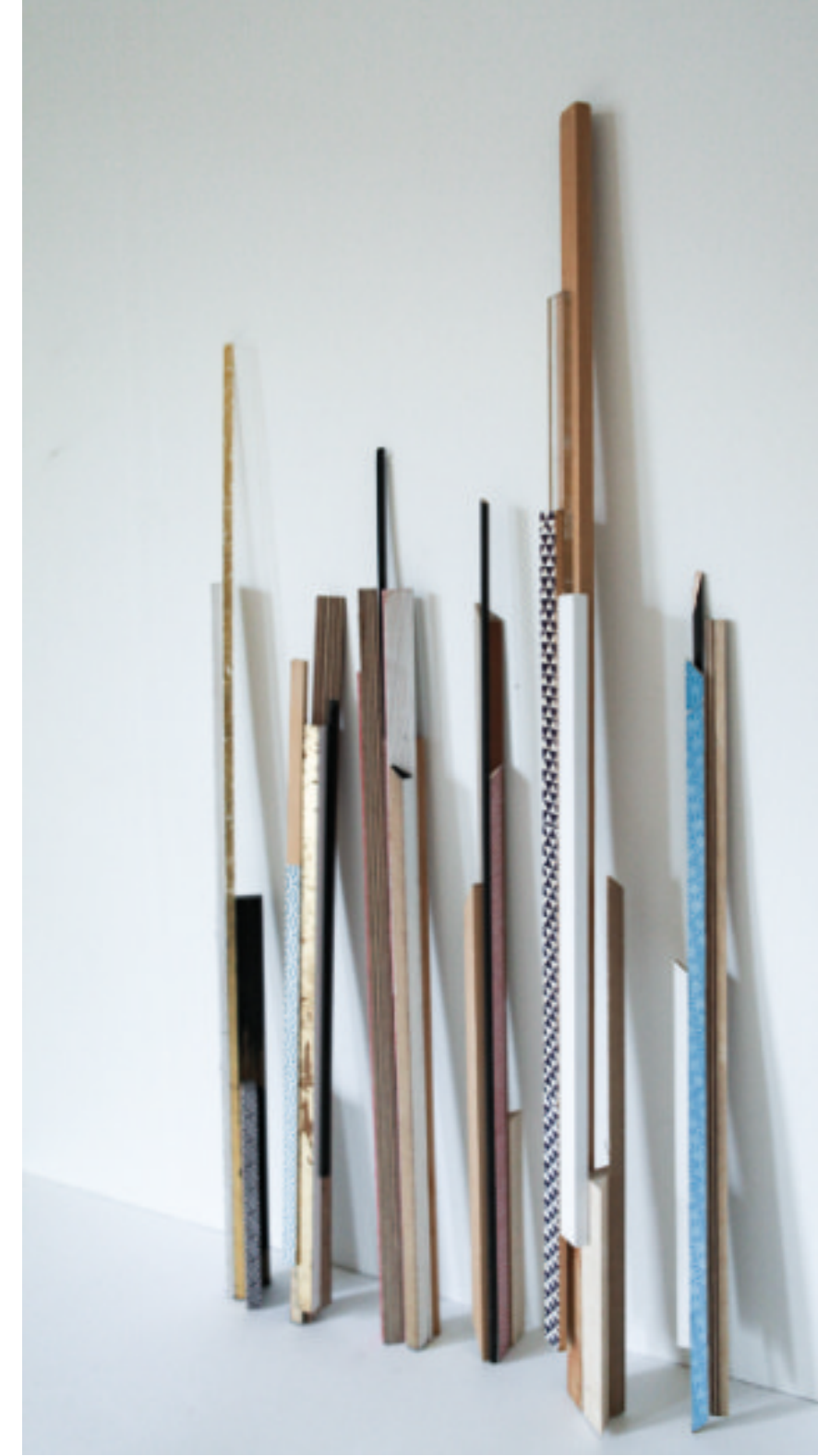
Included in the publication 'entfalte den schatten des sandkorns' / 'unfold the shadow of a grain of sand' //

limited edition 11/11 & 3ea. signed and numbered (each copy contains a handwritten text)texts in german and rhaeto-romanic

Photography by Christine Camenisch. Basel CH and Valentin Pitsch. Müstair



re\_mains/re\_frame. 2021/2022



re\_mains / re\_frame 2021 studio arrangement/another scenography  
different lengths. 2021/2022 GabriellaDisler  
**some available**

re\_mains/re\_frame. 2021/2022 are former parts of various installations and scenographies of the last years. these site-specific works; formerly variable. fixed only for the moment; were subject to a constant process of re-insertion. re-adaptation and citation. these former support structures were assembled into new individual objects. compositions. yet each piece receives its own texture and individuality re-mains/re\_frame are containers that connect different places. times and approaches of my artistic practice and research in terms of content.

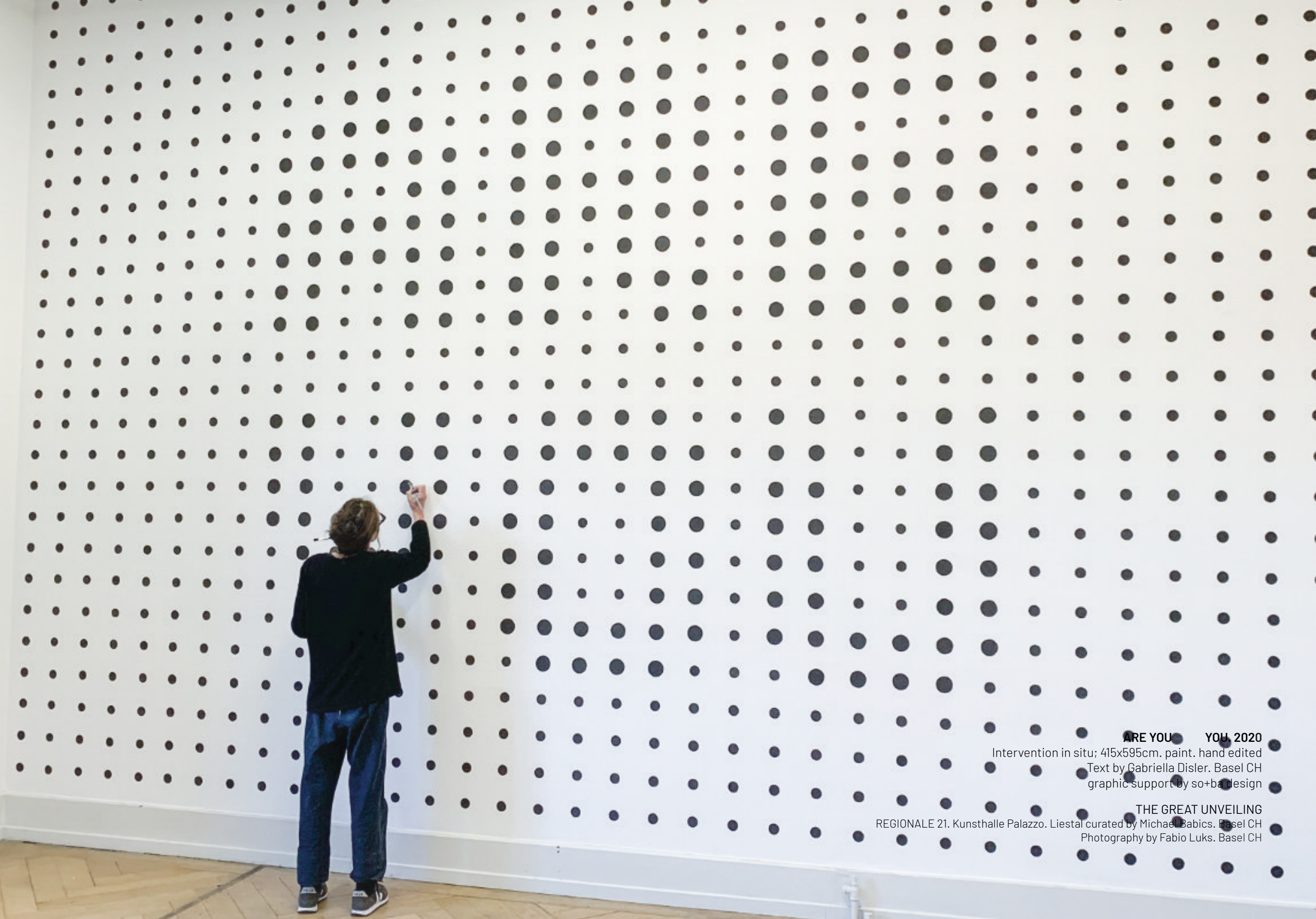


re\_mains/re\_frame. 2021/2022  
material; founded sticks. ink. paint. scotch. aurum (gold leaves). founded old origami paper (fleemarket tokyo 2012)  
different lengths. 2021/2022 GabriellaDisler

PING PONG 2022  
installation of re-mains/re\_frame 2021/2022 @ projectspace M54  
groupshow with artists from Basel CH. Berlin. Miami. Düsseldorf

on the floor: work by Franziska Furter, Basel

re\_mains/re\_frame. 2021  
2021 studio arrangement/another scenography  
**some are available**



**ARE YOU YOU, 2020**

Intervention in situ; 415x595cm. paint, hand edited

Text by Gabriella Disler. Basel CH

graphic support by so+ba design

**THE GREAT UNVEILING**

REGIONALE 21. Kunsthalle Palazzo. Liestal curated by Michael Babics. Basel CH

Photography by Fabio Luks. Basel CH



**ARE YOU YOU. 2020**

Intervention in situ. 415x595cm. paint s. hand edited  
Text by Gabriella Disler. Basel CH  
graphic support by so+ba design

**THE GREAT UNVEILING**

REGIONALE 21. Kunsthalle Palazzo. Liestal curated by Michael Babics. Basel CH





felsgeflüster. 2020  
Graphit on Concret. 7x712cm. hand edited  
Intervention in situ. Text by Gabriella Disler. Basel CH

Photography by Gabriella Disler; Basel CH  
and Pascal Lampert. Sta.Maria/ValMüstair

TERRA CIRCOLARE

on the occasion of the TWINGILandArt 2019 developed and displayed by founded branches of the current landslide in the Moritzgraben. TWINGI Canyon.

branches 7 x 6 meters are laid out like a ribbed arch and marked along the axis with naturally degradable neon orange paint. The colour refers to the different markings in the urban space, along paths and roads, in the landscape, but also to other clues that need to be seen. These markings serve both for protection and safety, next to the installation, engraved on aluminium and mounted on a birch tree, a text fragment serves as an additional level to explore the relationship between the tree and its immediate environment. the installation - left to itself - will decay in the course of summer 2019 and return to the cycle of nature.





Linien gefüllt mit Wissen  
im Reigen der Jahre  
die sich auseinanderfahren

Geschwind huschen behände Schritte  
bedecken leise sacht verhaltenes  
ab und an ein\*





what is or will it be? will it be new?  
 a sound of the locomotion within the membrane  
 through my mouth to my skin  
 I tested with my nose the breath  
 even the dirt when reached close onto an inner arid

JUST A BREATH

JUST A BREATH  
 over and over and over and over

some breath possible?  
 almost tracing the touch of the taste

WHEN MY EAR

BEFORE THE WASHING MACHINE

and  
 then it all began  
 see the hot business inside my ear

some how touch but the dirt part



to feel collected, composed  
 some tracks continued as a silent  
 a pronounced sonic of

an unknown language I'm not used to speak

listen to some thoughts on my eyes

it's possible to recover the sound

over and over and over

to come towards their tangible difference  
 wherever out of place

such and seems mine

when I was a child  
 I wanted to read, to see and touch words  
 when I grew up  
 I wanted to hear with my eyes, see with my tongue and speak with my ears

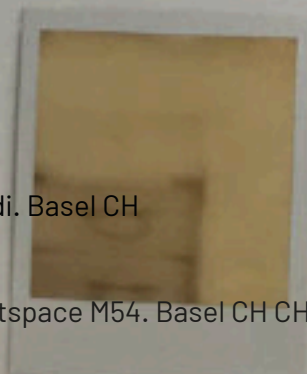
the language is a mapping of words  
 words that generate within the

a pronounced speech

outside the thought

at a time

the words - the sound - the matter  
 a temporary forgetting  
 dialogue is a composition of sound



listen to your eyes ... 2017/2019

text by ©Gabriella Disler  
 audio. approx. 9Min: voices; Gabriella Disler. Basel CH // Rama Kalidindi. Basel CH  
 limited edition box; memory & text; signed. numbered

regionale20. Future Perfect curated by Isabel Balzer. Basel CH. projectspace M54. Basel CH CH



**I lay between... 2017/2019**

text by ©Gabriella Disler  
audio. approx. 9Min: voices; Gabriella Disler. Basel CH // Rama Kalidindi. Basel CH  
limited edition box; memory & text; signed. numbered

**listen to your eyes**

artist book. unique polaroids. 2017/2019 limited edition  
text and designed by ©Gabriella Disler  
Installation in situ; on different layers.  
**artist book available**

0 0  
0 L O N G  
H O W L O N G I S N O W  
O

**HOW LONG IS ...**  
temporary on-site intervention  
text and made by ©GabriellaDisler  
dimension variable; 1.85 x 8.46 m  
projectspace M54. Basel CH  
graphic support by so+ba design



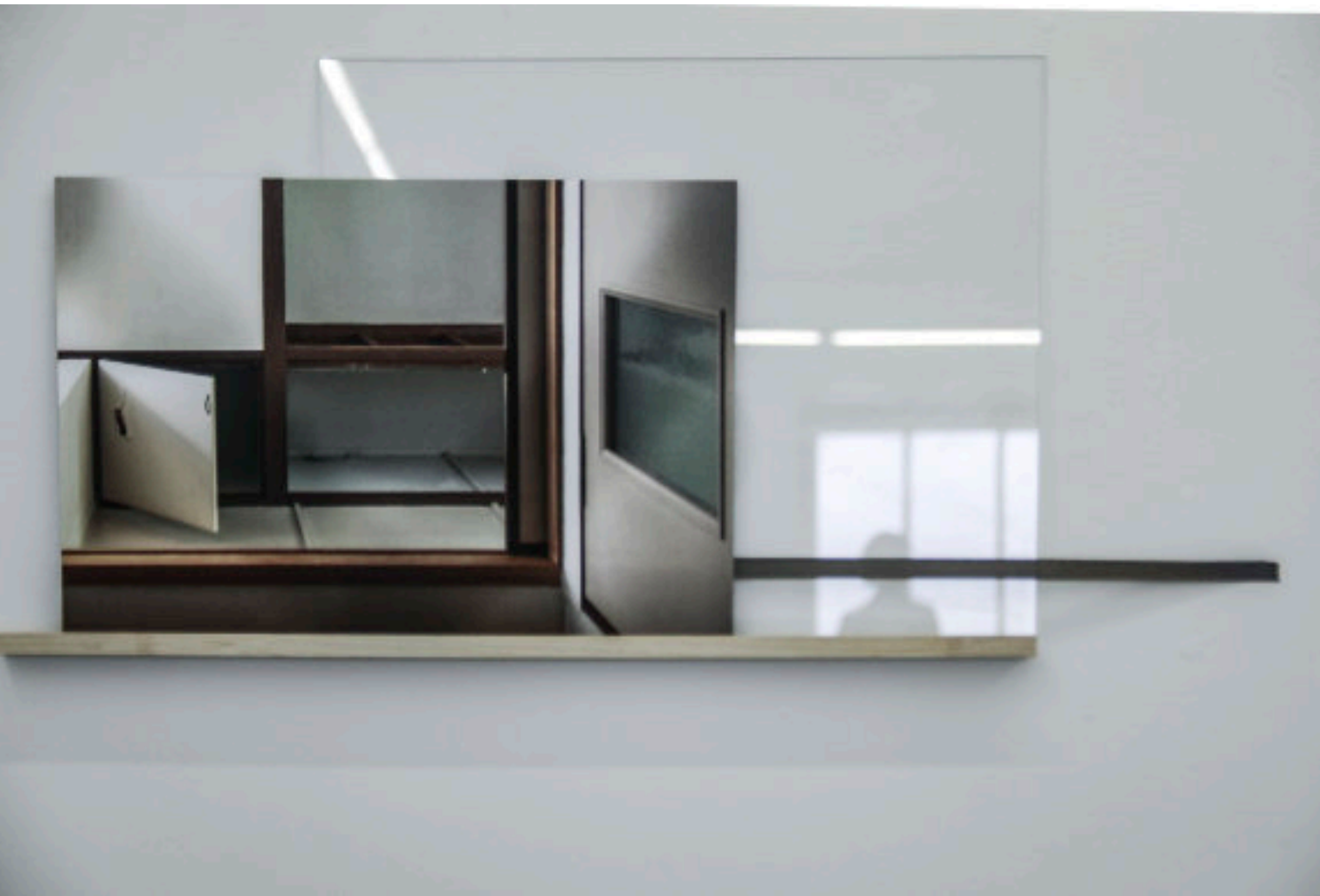
balzerprojets; Basel CH  
groupe exhibition; **On Destruction and Preservation**  
close up. installation in situ with , Disappearance Memories' I & II.2012/2019  
on shelves. glasses; dimension variable  
photography. Fine Art Print. 32x47 cm  
**some available**



balzerprojets; Basel CH  
groupe show **On Destruction and Preservation**  
*Disappearance Memories' I & II*" (2012) *in situ installation*. 2012/2019  
on shelves. glasses; dimension variable  
Photography. Fine Art Print. 32x47cm. 47x32cm. 45x60cm.  
**some available**

balzerprojects; Basel CH  
groupe show; **On Destruction and Preservation**  
, Disappearance Memories I & II. *in situ installation*. 2012/2019  
on shelves. glasses; dimension variable  
Photography. Fine Art Print.  
32x47cm. 47x32cm. 45x60cm. edition 3 & e.a

foreground partialview 'Lost' Stefanie Bühler. DE



balzerprojects; Basel CH  
groupe show; **On Destruction and Preservation**  
partial view and close up. installation in situ with , Disappearance Memories' I & II.2012/2019  
Photography. Fine Art Print. 32x47cm. 47x32cm. on shelves glasses. dimension variable.  
**some available**



BelleVue - Ort der Fotografie; Basel CH  
**en passant**

Entrance View

Urban Oases. N°4 & Urban Oases N°2. 2018/2011

Photography. Fine Art Print. 60x90cm & e.a

**photo not available**



BelleVue - Ort der Fotografie; Basel CH  
**en passant**  
Entrance View  
Urban Oases N°1. Urban Oases. N°4 & Urban Oases N°2. 2018/2011  
Photography. Fine Art Print. 60x90cm & e.a  
**photos not available**



BelleVue - Ort der Fotografie; Basel CH 2018

**en passant**

Entrance View

Urban Oases. N°4 & Urban Oases N°2. 2018/2011

Photography. Fine Art Print. 60x90cm & e.a

**Not available**



BelleVue - Ort der Fotografie; Basel CH  
**en passant**  
Room View / Mirroring the space  
Urban Oases. 2018/2011  
Photography. Fine Art Print. 60x90cm & e.a



BelleVue - Ort der Fotografie; Basel CH  
**en passant**  
Display / Mirroring 2018/2011  
acrylic sheet 60x90cm.



**O.T - remote memories N°1**  
Tripod. Beamer. Photography  
b/w. hand edited  
48.5x66.5cm / 52.5x74.5cm  
courtesy of the artist  
**photo available**



... like instants. notes of a single moment in space. fragile elusive territories. make the movement of a single moment almost imperceptible. given words to the unknown. fading of sensations. to light and traces. vague conditions.

the absence and the traces of the spoken words continue and reside ... a transient state

alternative acts. ExtraCity. Antwerpen BE 2017

**I lay between those turning pages**

audio recorded. approx..11min.

1 pod classic. 2 headphones

text © Gabriella Disler. Antwerpen/Basel CH 2017

sound: felix probst. tenor-saxophone. improvisation. 2017



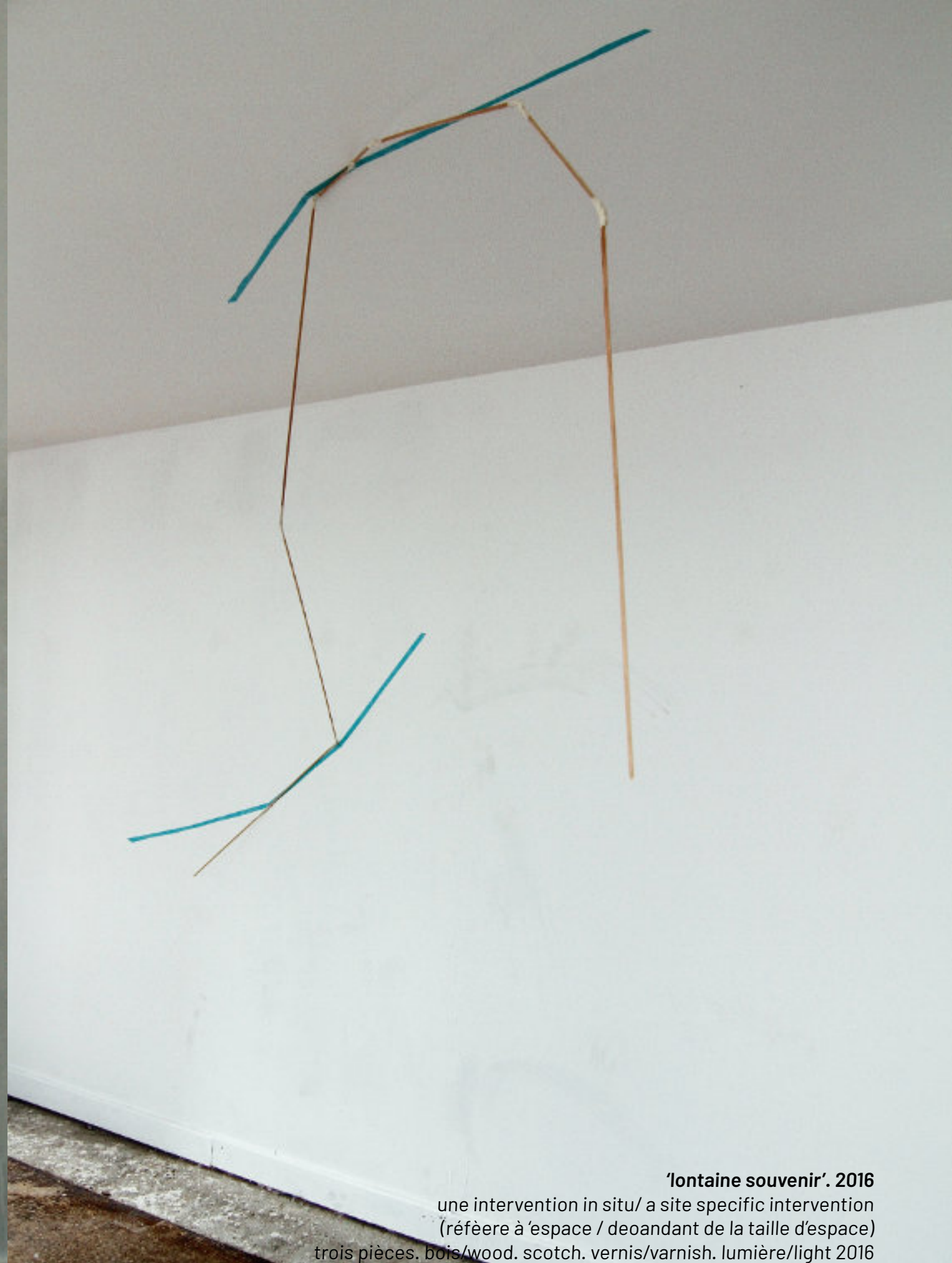
alternative acts. ExtraCity. Antwerpen BE 2017  
**I lay between those turning pages**  
glas 23x41. rosenstock lens Ø 13 cm (enlarger (approx.1960)]. daylight



alternative acts. ExtraCity. Antwerpen BE 2017  
**I lay between those turning pages**  
lecture performance V1. filmstills  
text © Gabriella Disler. Antwerpen/Basel CH  
recording by Bart Kok. Antwerpen

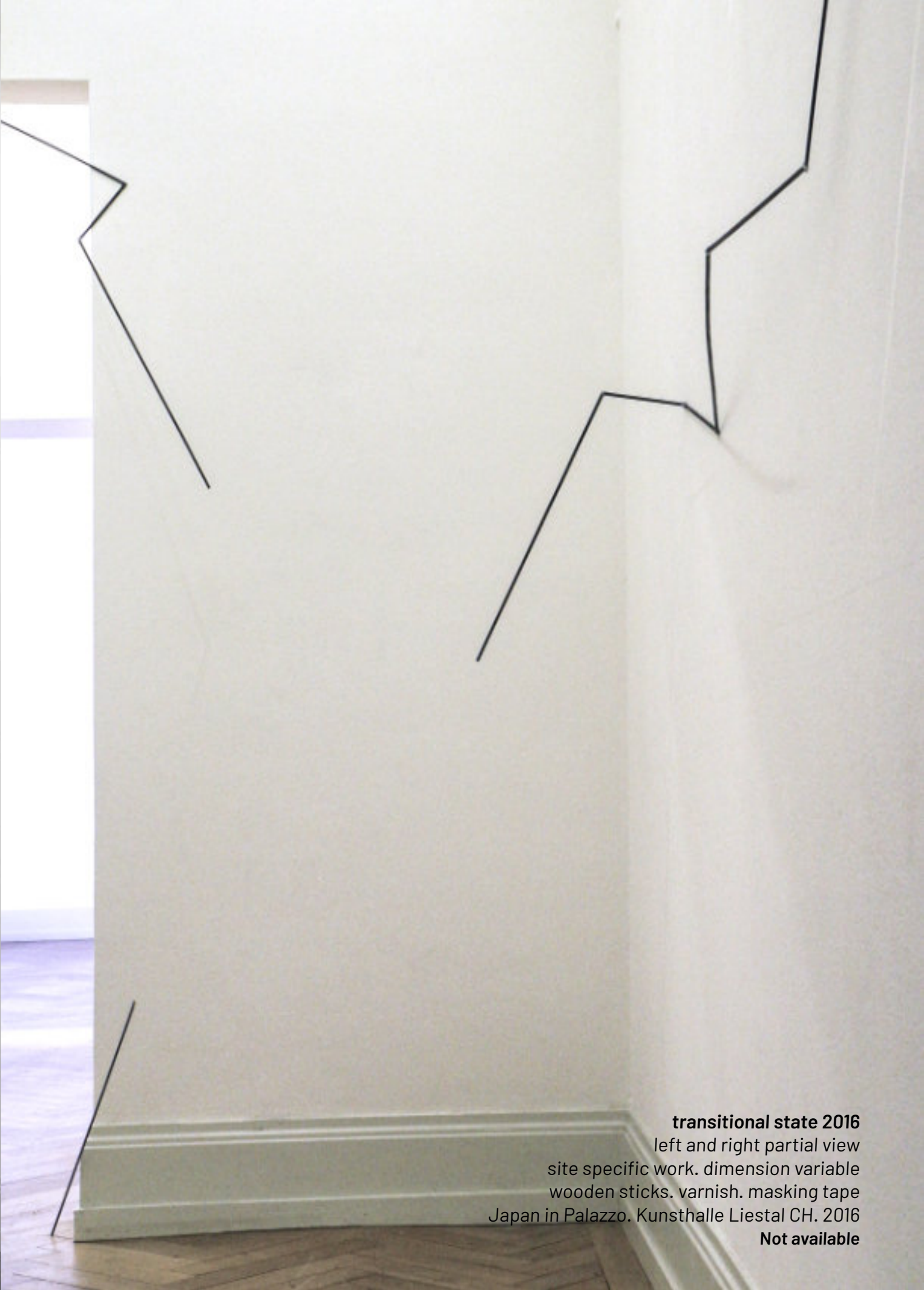


**réserve de la lumière – une histoire entreposée**  
edition limitée. n°01 - 07. 2016. villa moyard. morges  
unique pièce // grandeur diverse/variable dimension. feuille au vernis/ page of varnish. boîte /box. métal  
**not available**



**'lontaine souvenir'. 2016**  
une intervention in situ/ a site specific intervention  
(réfèere à 'espace / deoandant de la taille d'espace)  
trois pièces. bois/wood. scotch. vernis/varnish. lumière/light 2016  
villa moyard. morges





**transitional state 2016**  
left and right partial view  
site specific work. dimension variable  
wooden sticks. varnish. masking tape  
Japan in Palazzo. Kunsthalle Liestal CH. 2016  
**Not available**



**transitional state 2016**  
left and right partial view  
site specific work. dimension variable  
wooden sticks. pe foil. varnish. masking tape  
Japan in Palazzo. Kunsthalle Liestal CH.2016

trave\_logue by 2\* // duo\_logue  
with Fork Burke. USA/CH, Tom Fellner. ZH, Alex Herzog. ZH,  
Saori Kuno. NL/JPN & Erika Piri. MEX/CH  
at Kaskadenkondensator Basel CH . 2015





**inter\_logue. 2015**

site specific Installation

transparent varnish. size approx 2.30m x 11.0m

display; spatial situation at Kaskadenkondensator Basel CH. CH in , trave\_logue' 2015



inter\_logue. 2015  
display; spatial situation at Kasko Basel CH in 'trave\_logue'  
transparent varnish. approx 2.30m x 11.0m

Gabriella Disler  
www.gabrielladisler.ch  
art@gabrielladisler.ch

all photographs © by gabrielladisler.ch

except:  
ARE YOU YOU. © by fabio luks. Basel CH  
HOW LONG IS...© by gert handschin. Basel CH  
beyond © by ralph hauswirt. Basel CH